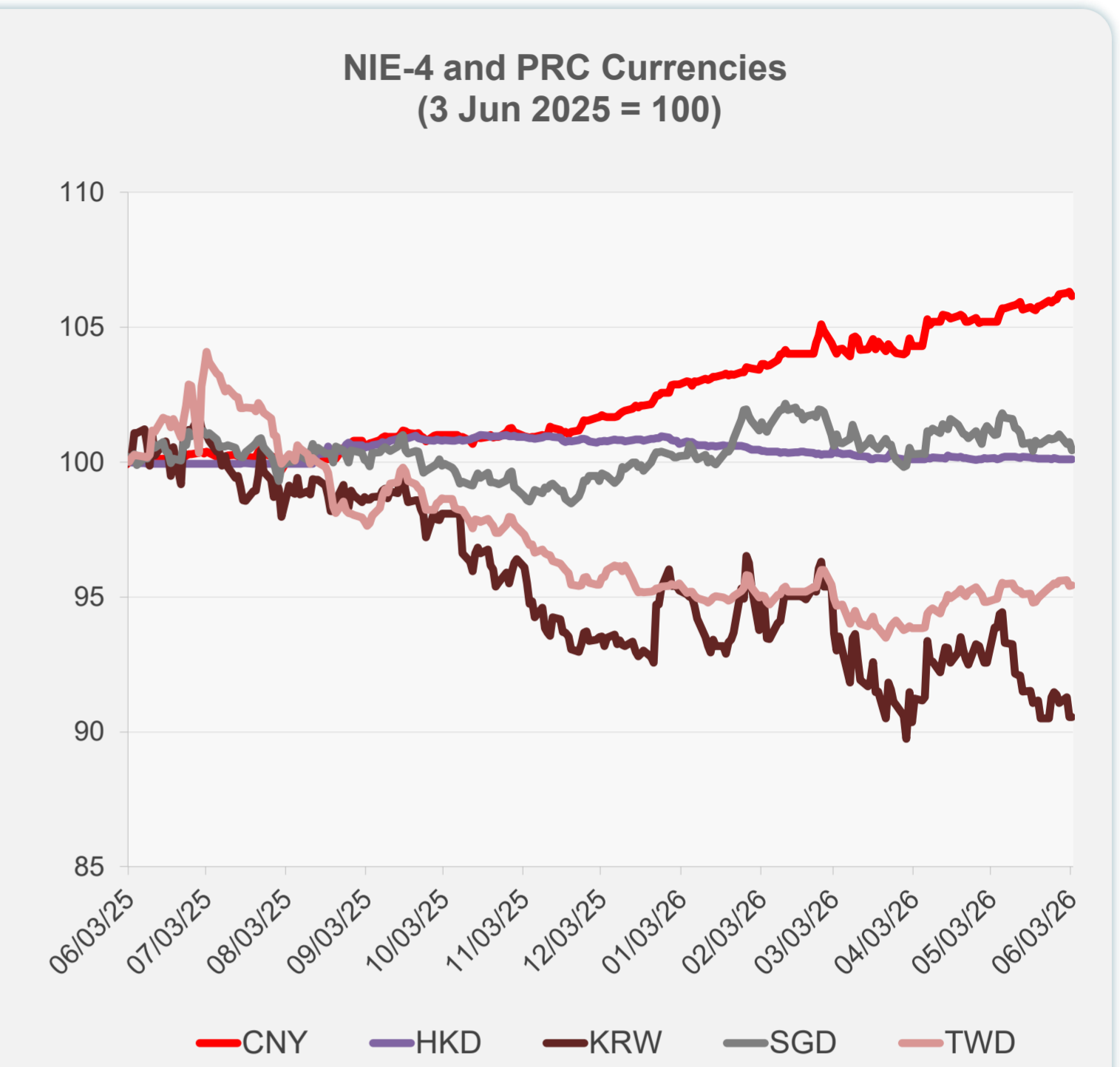
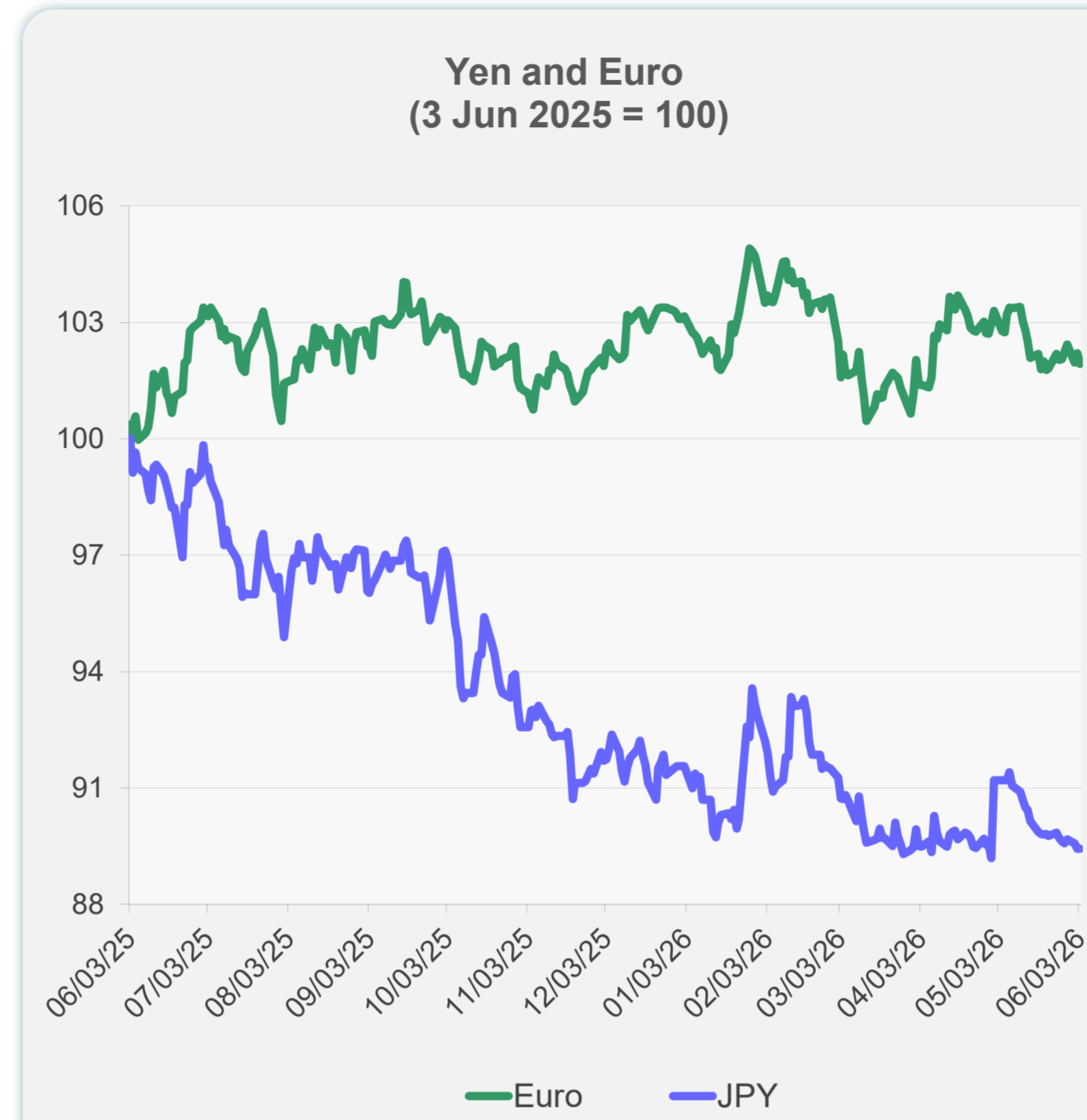
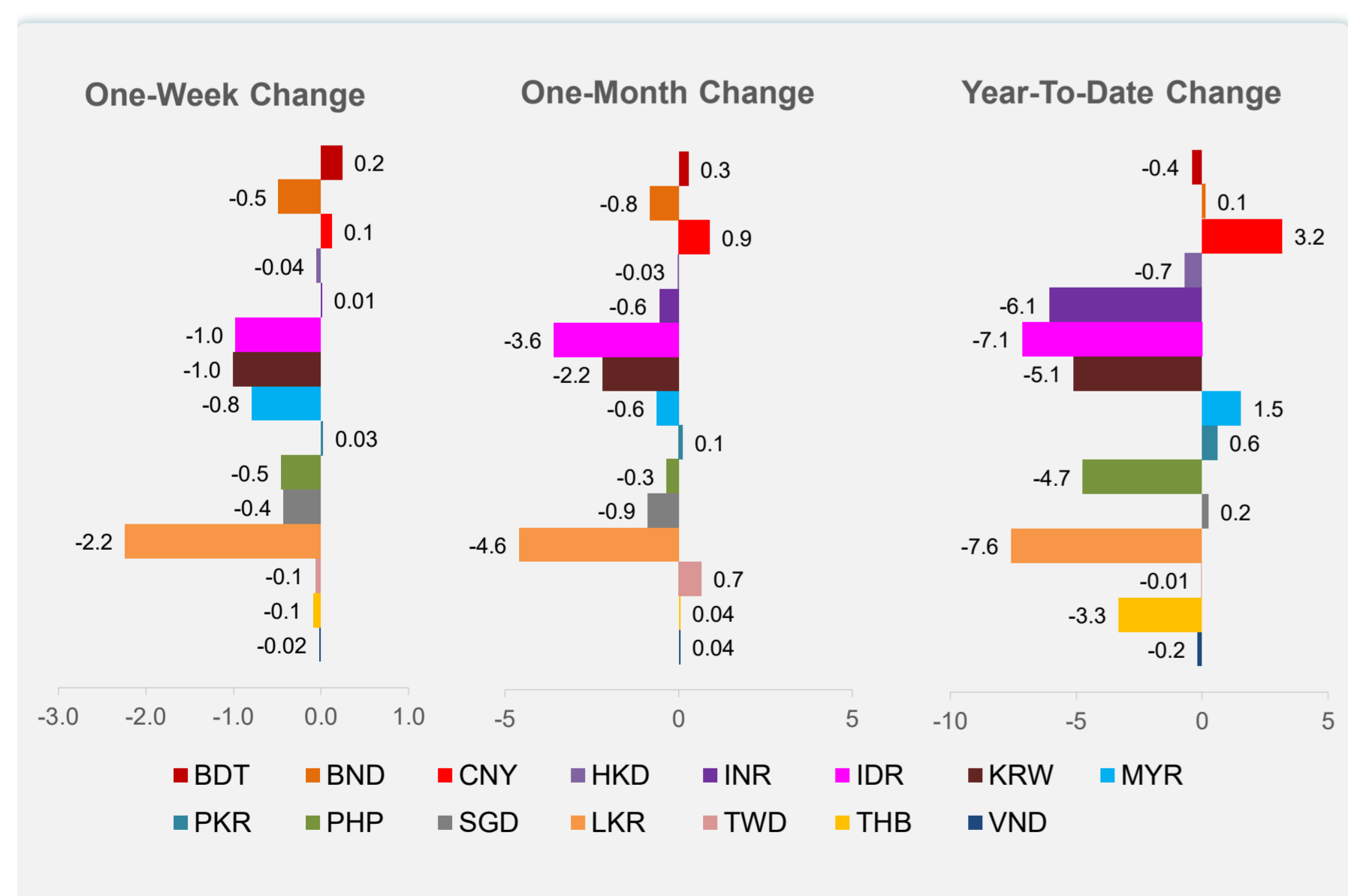
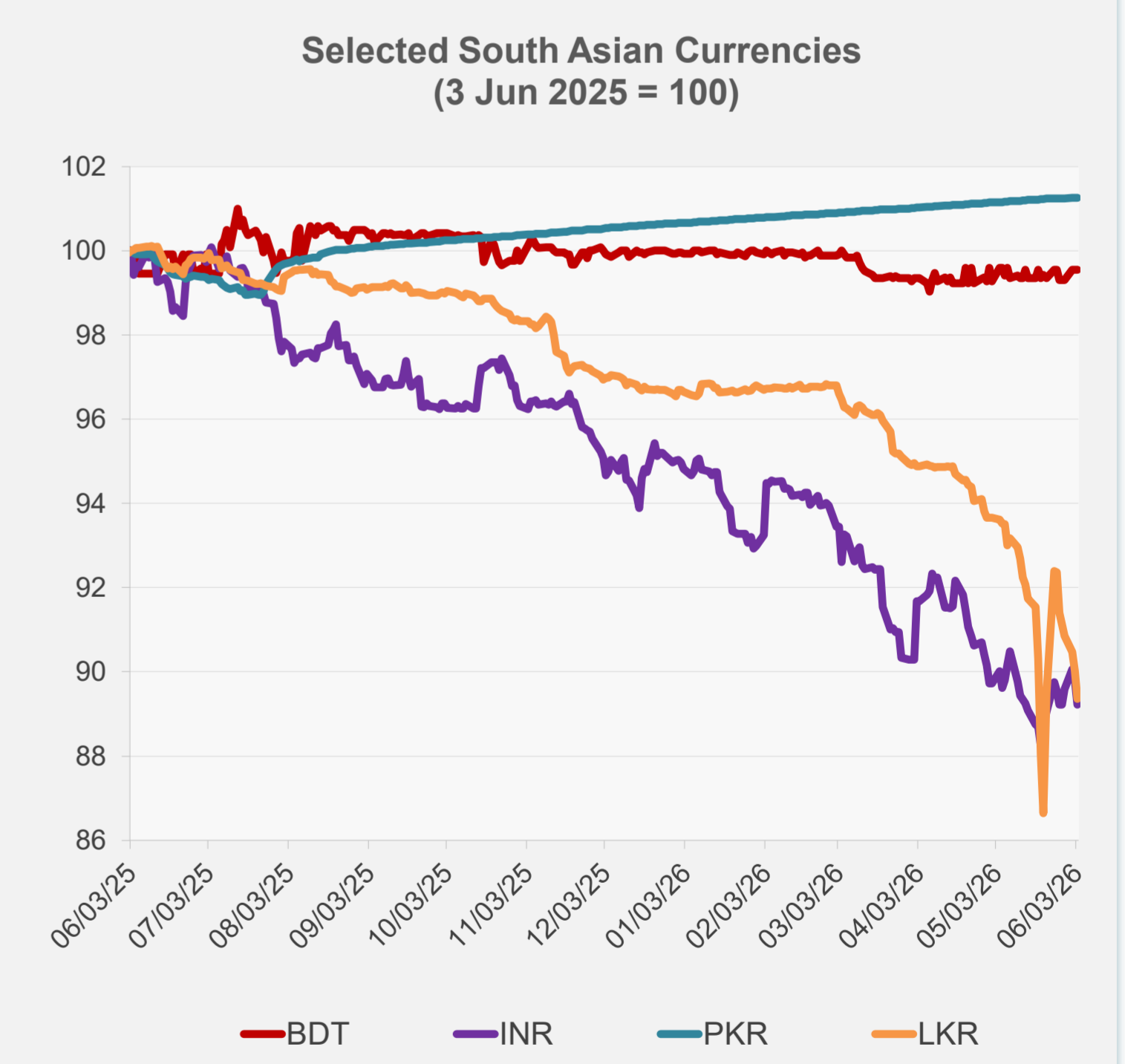
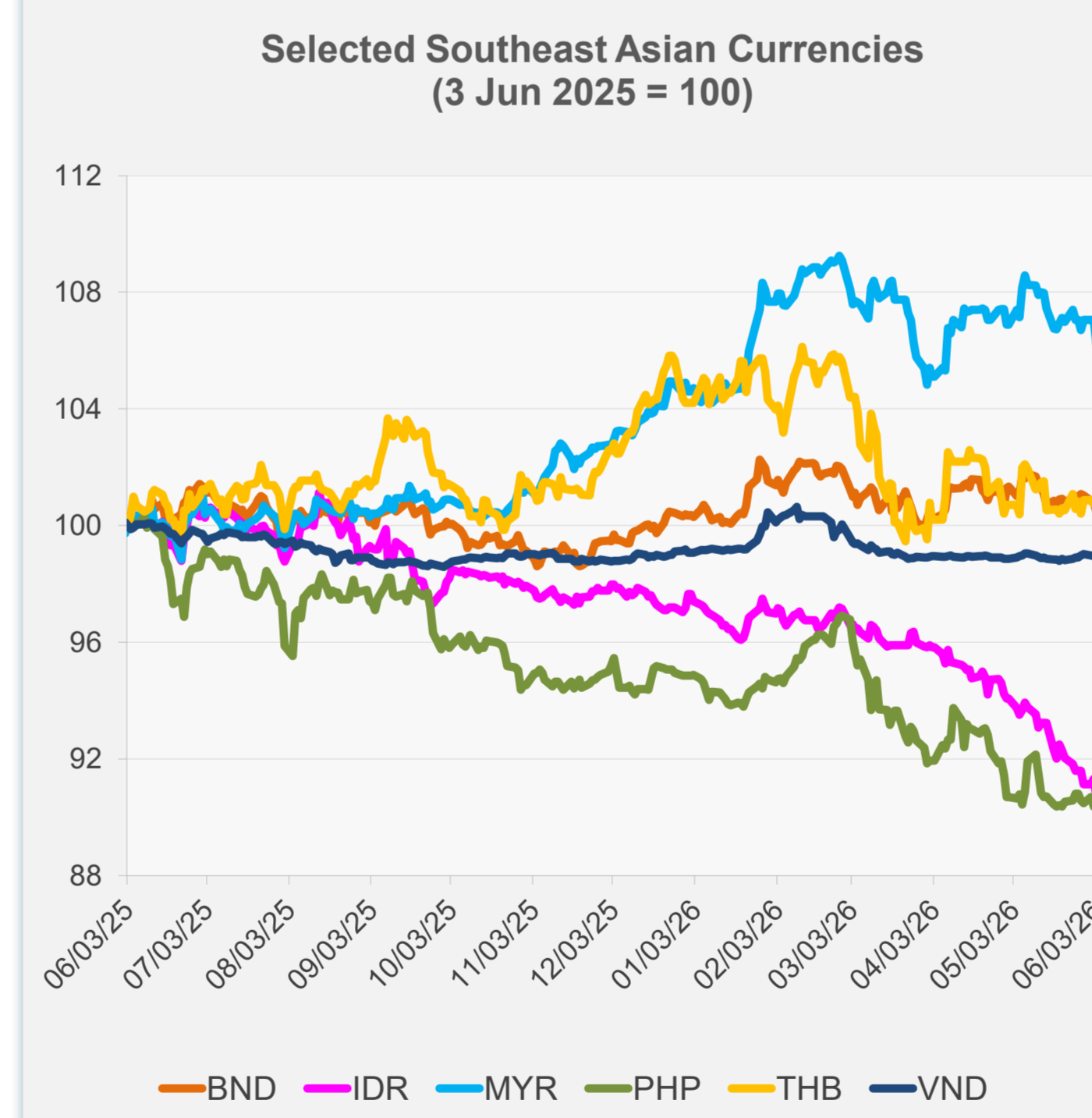


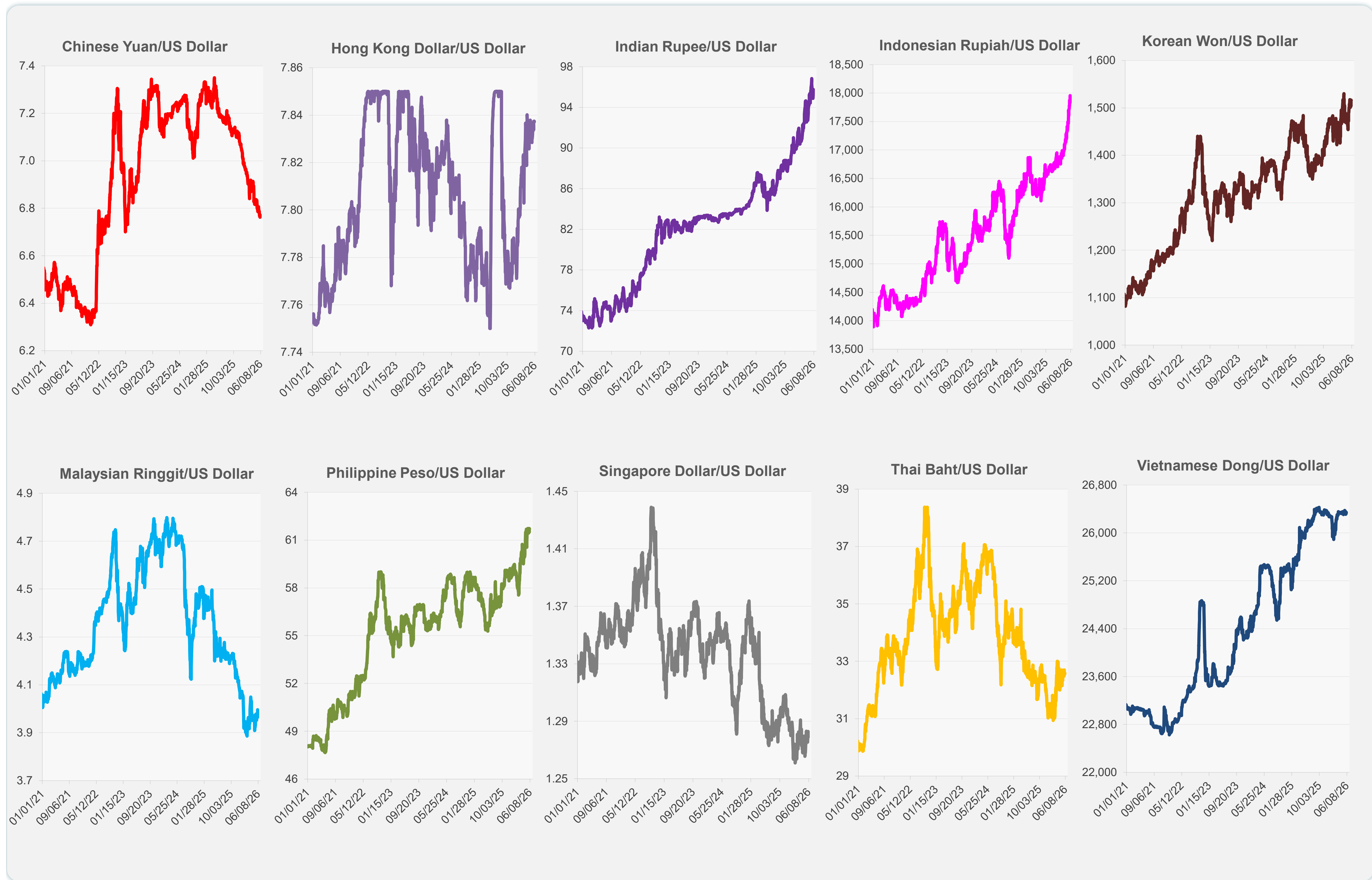
	Latest Closing	% change from Previous Day	% change from 01-Jan-26
Euro	0.86	-0.28	-1.13
Japanese yen (JPY)	159.70	-0.01	-2.33
Bangladeshi taka (BDT)	122.75	0.00	-0.41
Brunei dollar (BND)	1.28	-0.30	0.12
Chinese yuan (CNY)	6.77	-0.16	3.18
Hong Kong dollar (HKD)	7.84	0.00	-0.69
Indian rupee (INR)	95.78	-0.64	-6.06
Indonesian rupiah (IDR)	17,955.00	-0.67	-7.13
Korean won (KRW)	1,516.40	0.00	-5.10
Malaysian ringgit (MYR)	4.00	-0.79	1.54
Pakistan rupee (PKR)	278.43	0.01	0.60
Philippine peso (PHP)	61.72	0.01	-4.72
Singapore dollar (SGD)	1.28	-0.32	0.25
Sri Lanka rupee (LKR)	335.00	-0.75	-7.58
Taipei,China NT dollar (TWD)	31.44	0.02	-0.01
Thai baht (THB)	32.59	0.00	-3.31
Vietnamese dong (VND)	26,344.50	-0.05	-0.17



NIE = Newly Industrialized Economies



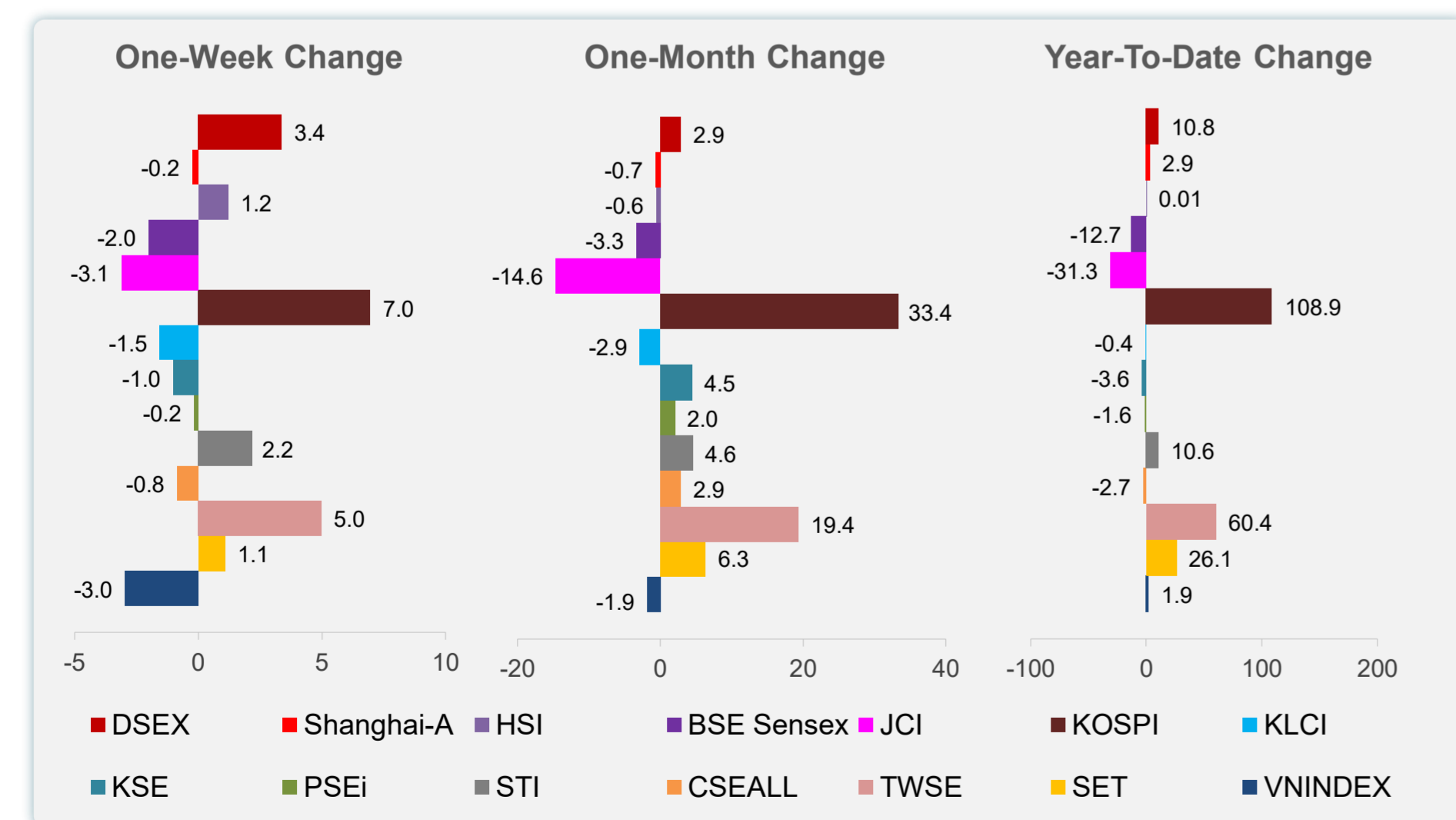
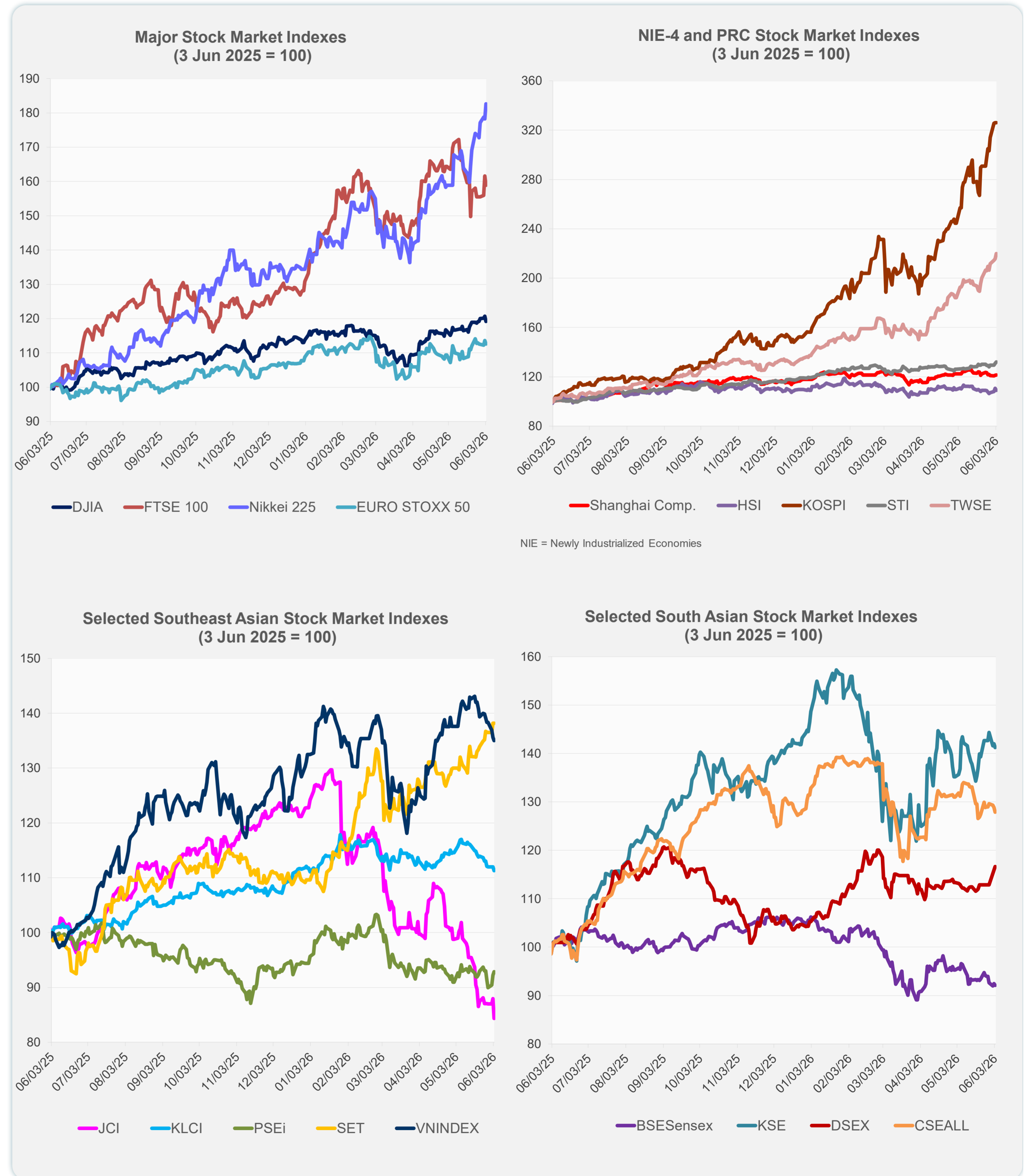
Note: Negative/Decreasing values indicate depreciation of local currency, and positive/increasing values indicate appreciation.
Source: ADB calculations using data from Bloomberg and Haver Analytics.



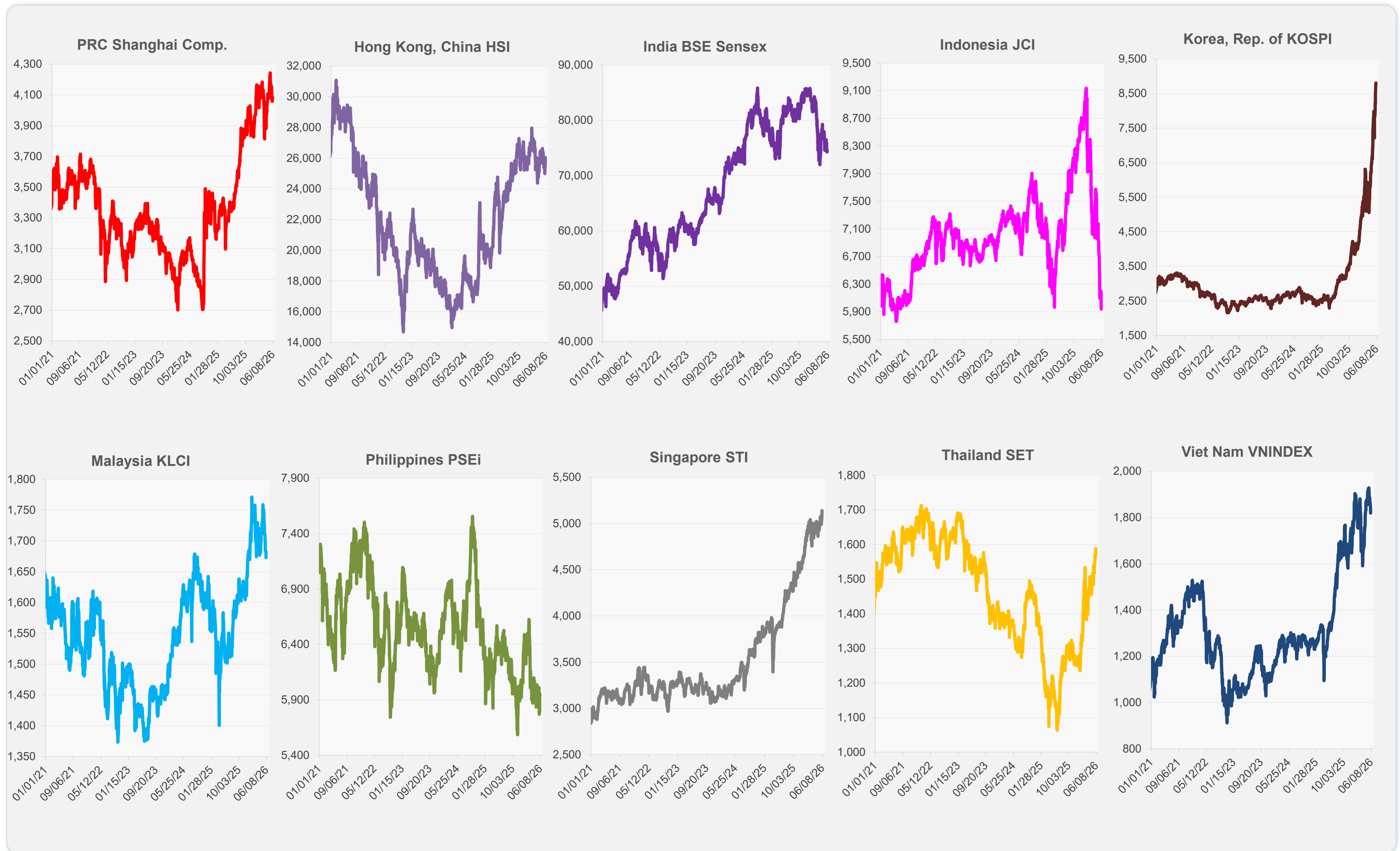
Source: Haver Analytics.

Daily Market Watch
STOCK INDEXES

	Latest Closing	% change from Previous Day	% change from 01-Jan-26
US Dow Jones Ind Avg	50,687.07	-1.21	5.46
US NASDAQ	26,853.97	-0.89	15.54
US S&P 500	7,553.68	-0.74	10.35
UK FTSE 100	13,965.65	-1.65	24.01
EURO STOXX 50	6,053.57	-0.89	4.53
Japan NIKKEI 225	68,402.13	2.50	35.88
Bangladesh DSEX	5,441.66	0.66	10.81
PRC Shanghai Comp.	4,083.97	0.22	2.90
Hong Kong, China HSI	25,633.21	-1.56	0.01
India BSE Sensex	74,346.17	-0.41	-12.73
Indonesia JCI	5,941.07	-4.11	-31.29
Korea, Rep. of KOSPI	8,801.49	0.00	108.85
Malaysia KLCI	1,672.74	-0.61	-0.44
Pakistan KSE 100	170,182.90	-0.57	-3.57
Philippines PSEi	5,953.17	0.68	-1.65
Singapore STI	5,138.24	0.80	10.59
Sri Lanka CSEALL	22,011.10	-0.75	-2.71
Taipei, China TWSE	46,459.16	1.98	60.41
Thailand SET	1,588.06	0.00	26.07
Viet Nam VNINDEX	1,819.01	-0.41	1.93



Sources: ADB calculations using data from Bloomberg and CEIC Data Company.



Sources: ADB calculations using data from Bloomberg and CEIC Data Company.

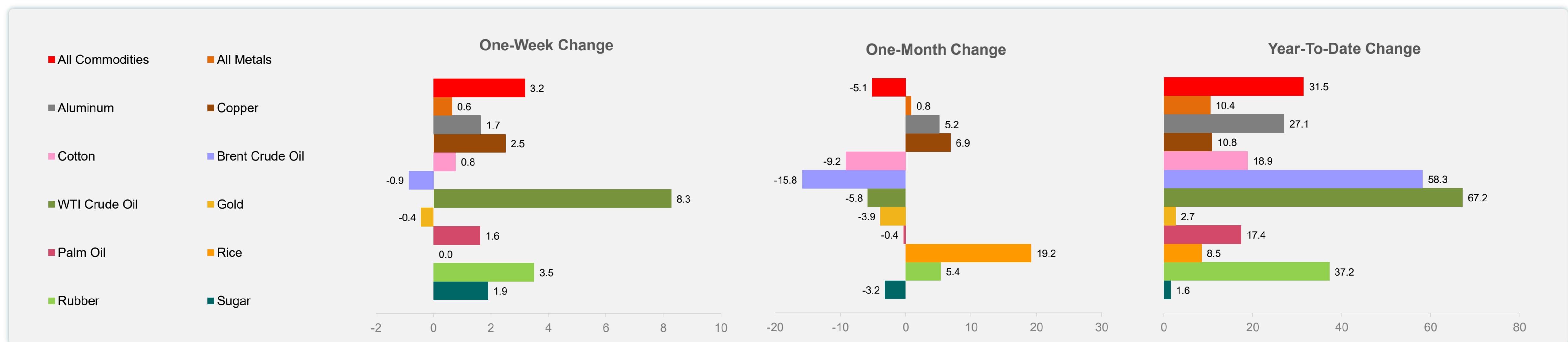
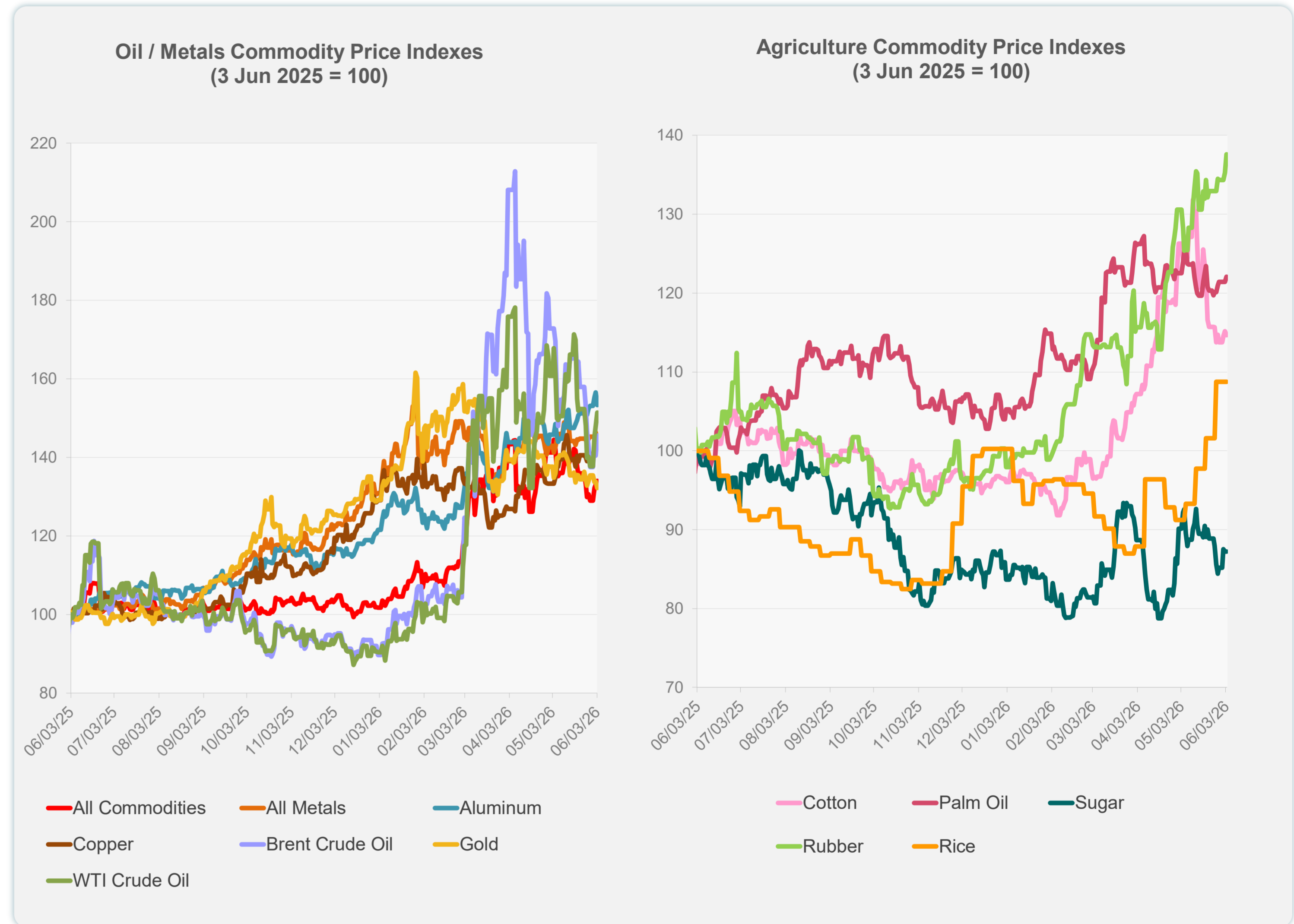
Daily Market Watch
COMMODITY PRICES

4 June 2026, 9:00 AM Manila

	Unit	Latest Closing	% change from Previous Day	% change from 01-Jan-26
S&P All Commodities	US\$	721.21	0.70	31.48
S&P All Metals	US\$	490.04	-1.52	10.43
Aluminum	US\$/metric ton	3,771.72	-2.05	27.08
Copper	US\$/metric ton	13,802.37	-1.67	10.83
Cotton	US cents/lb	73.73	-0.42	18.88
Brent Crude Oil	US\$/barrel	98.82	3.61	58.25
WTI Crude Oil	US\$/barrel	96.02	2.41	67.22
Gold	US\$/troy oz	4,434.81	-1.20	2.67
Palm Oil	US\$/metric tonne	1,136.93	0.52	17.37
Rice ¹	US\$/metric ton	484.00	0.00	8.52
Rubber ²	US\$/kg	295.00	1.72	37.21
Sugar	US cents/lb	15.02	0.00	1.56

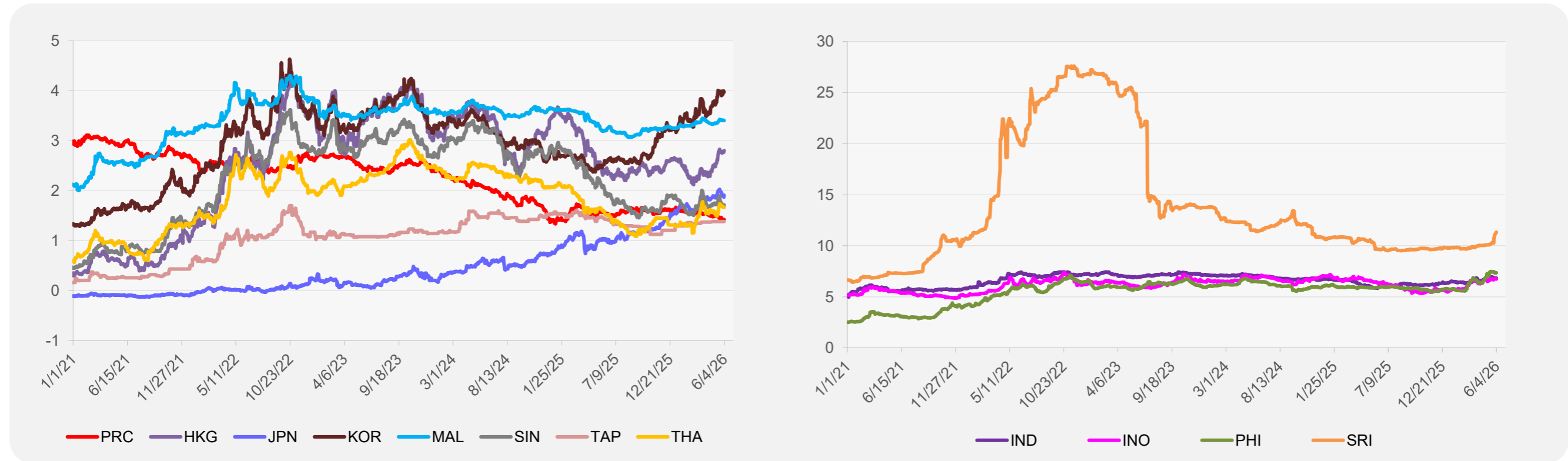
¹ Latest closing price from 27 May 2026.

² Singapore Exchange, Ribbed Smoked Sheet Rubber.

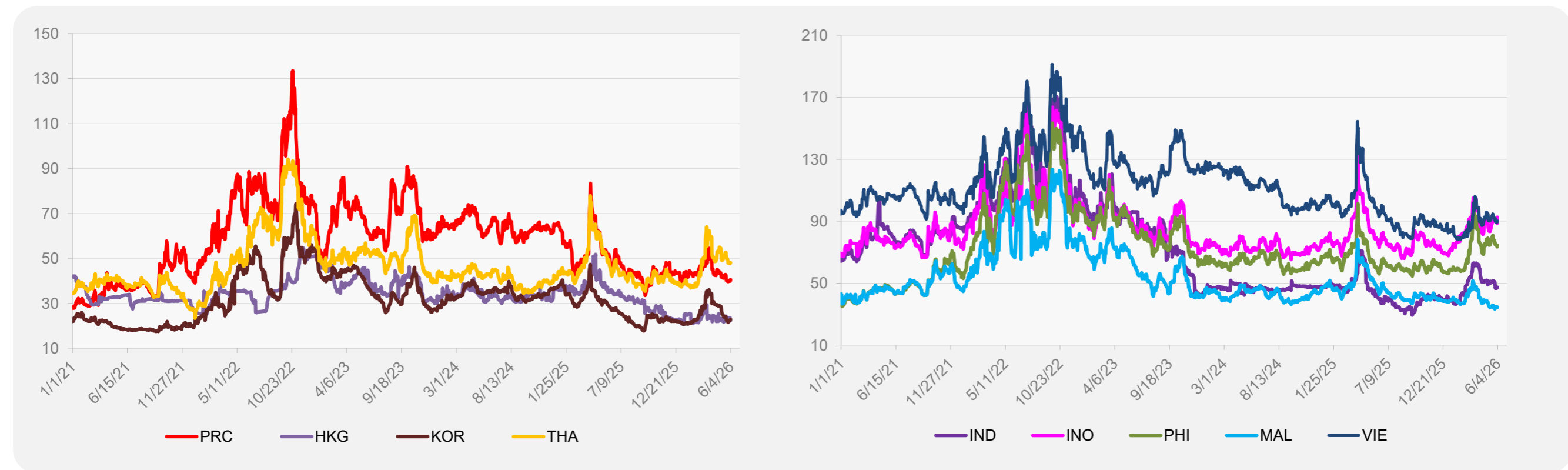


Source: ADB calculations using data from Bloomberg.

5-YEAR LOCAL CURRENCY GOVERNMENT BOND YIELDS (%)



5-YEAR CREDIT DEFAULT SWAP¹



¹ In USD and based on sovereign bonds.
Source: ADB calculations using data from Bloomberg.